



Harmes Turner Brown

Molesey Road, Walton-On-Thames, Surrey, KT12 4QY



£2,250 Per Calendar Month

OPEN DAY TUESDAY 24TH 10-11AM

A well-presented three-bedroom semi-detached home, ideally situated within a short walk of Hersham mainline station.

Offered to the market unfurnished and available from the start of March, the property provides well-balanced and versatile accommodation throughout. The ground floor comprises a separate living room and a modern fitted kitchen opening into a dining area with doors leading directly onto the rear garden. There is also the added benefit of a useful utility room and a contemporary downstairs bathroom.

To the first floor are three well-proportioned bedrooms along with a further shower room with WC.

Externally, the property enjoys a large rear garden, ideal for families or those seeking generous outdoor space, together with off-street parking to the front. There is also a garage to the rear which is accessed from the driveway.

Conveniently positioned for local shops, well-regarded schools and excellent transport links into London, this is a superb rental opportunity in a popular and well-connected location.

Available from the start of March and offered unfurnished.

INDEPENDENT ESTATE AGENTS

www.htbproperty.com

SALES • LETTINGS • MANAGEMENT

Walton Branch
45A High Street
Walton on Thames
Surrey KT12 1DH
01932 222266

sales@htbproperty.com
lettings@htbproperty.com



Registered address: 2 AC Court, Hight Street, Thames Ditton KT7 0SR Registered in England, Number 6433673

Molesey Branch
45 Walton Road
East Molesey
Surrey KT8 0DP
0208 001 8385

INDEPENDENT ESTATE AGENTS

www.htbproperty.com

SALES • LETTINGS • MANAGEMENT

Walton Branch
45A High Street
Walton on Thames
Surrey KT12 1DH
01932 222266

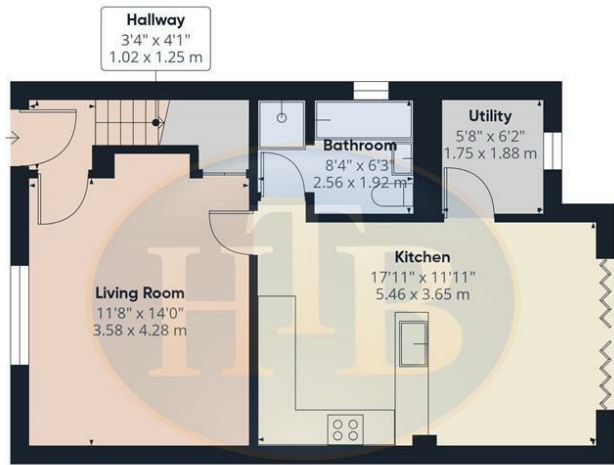
sales@htbproperty.com
lettings@htbproperty.com



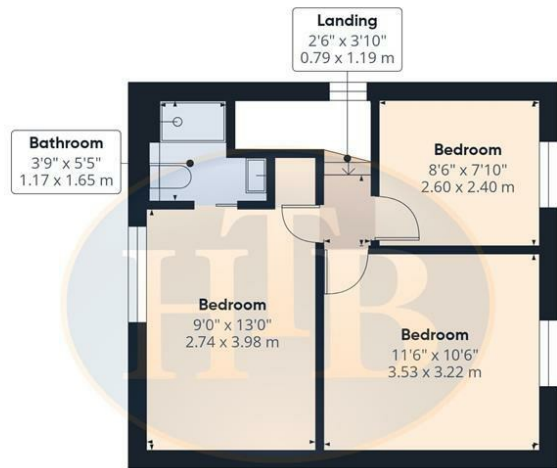
Registered address: 2 AC Court, Hight Street, Thames Ditton KT7 0SR Registered in England, Number 6433673

Molesey Branch
45 Walton Road
East Molesey
Surrey KT8 0DP
0208 001 8385

Molesey Road, Walton-On-Thames, Surrey, KT12 4QY



Floor 0



Floor 1



Approximate total area[®]
873 ft²
81 m²

(1) Excluding balconies and terraces

Calculations reference the RICS IPMS 3C standard. Measurements are approximate and not to scale. This floor plan is intended for illustration only.

GIRAFFE360



- Three-bedroom semi-detached home
- Available from the start of March
- Separate living room
- Utility room and downstairs bathroom
- Short walk to Hersham mainline station
- Offered unfurnished
- Modern fitted kitchen with dining area
- Large rear garden with off-street parking to the front